

Meteor Crater Prospect

Legend

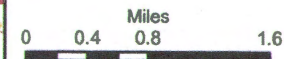
- Counties
- Township Lines
- Oil and Gas Parcels
- 13 - Oil and Gas Leases

Public Land Ownership

CATEGORY

- Private
- State Trust
- BLM
- Forest Service
- Indian Reservation
- Military
- Wildlife Refuge
- Local or State Parks
- Other
- Natl. Parks

- Holbrook Basin Oil and Gas Leases

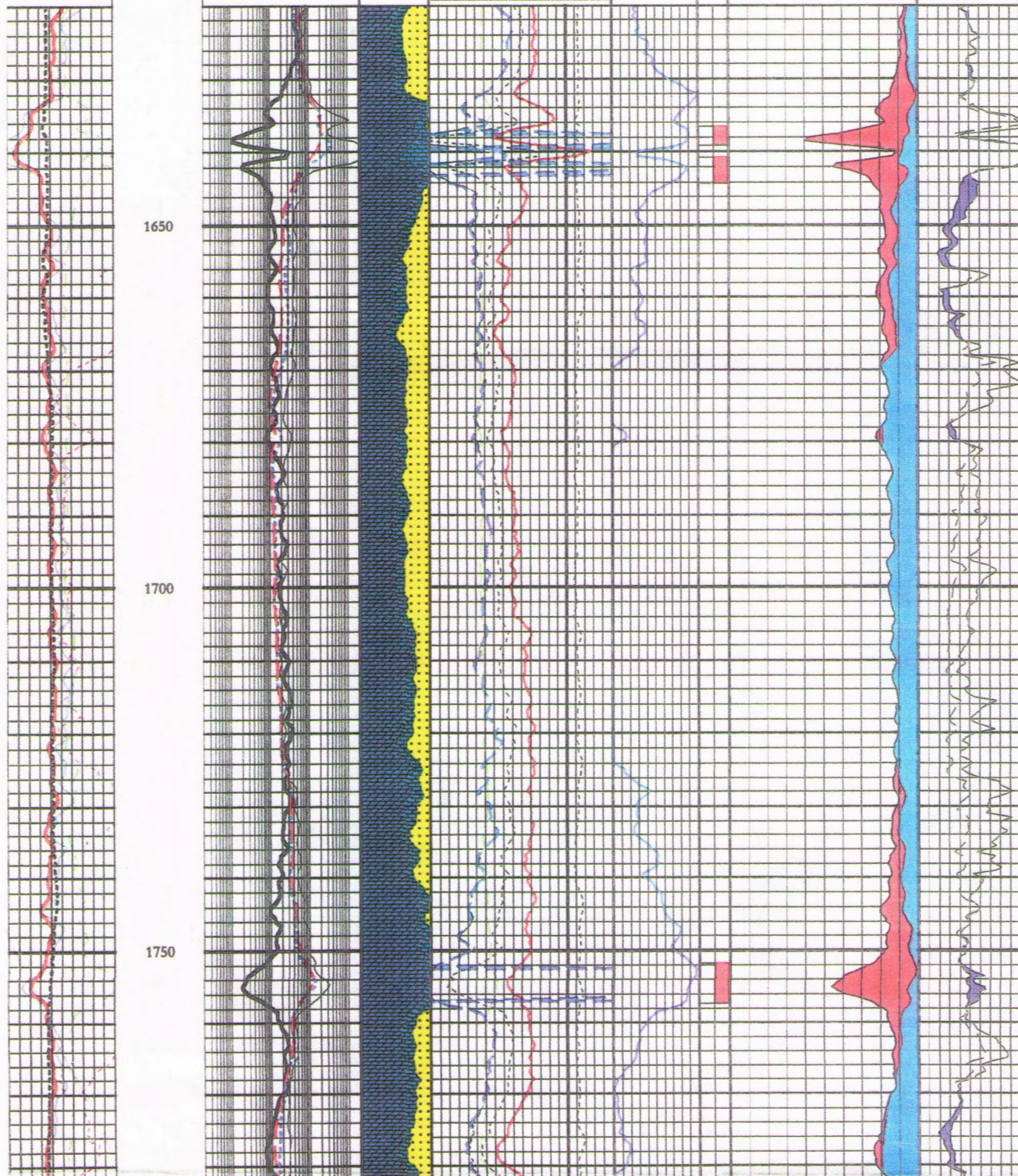


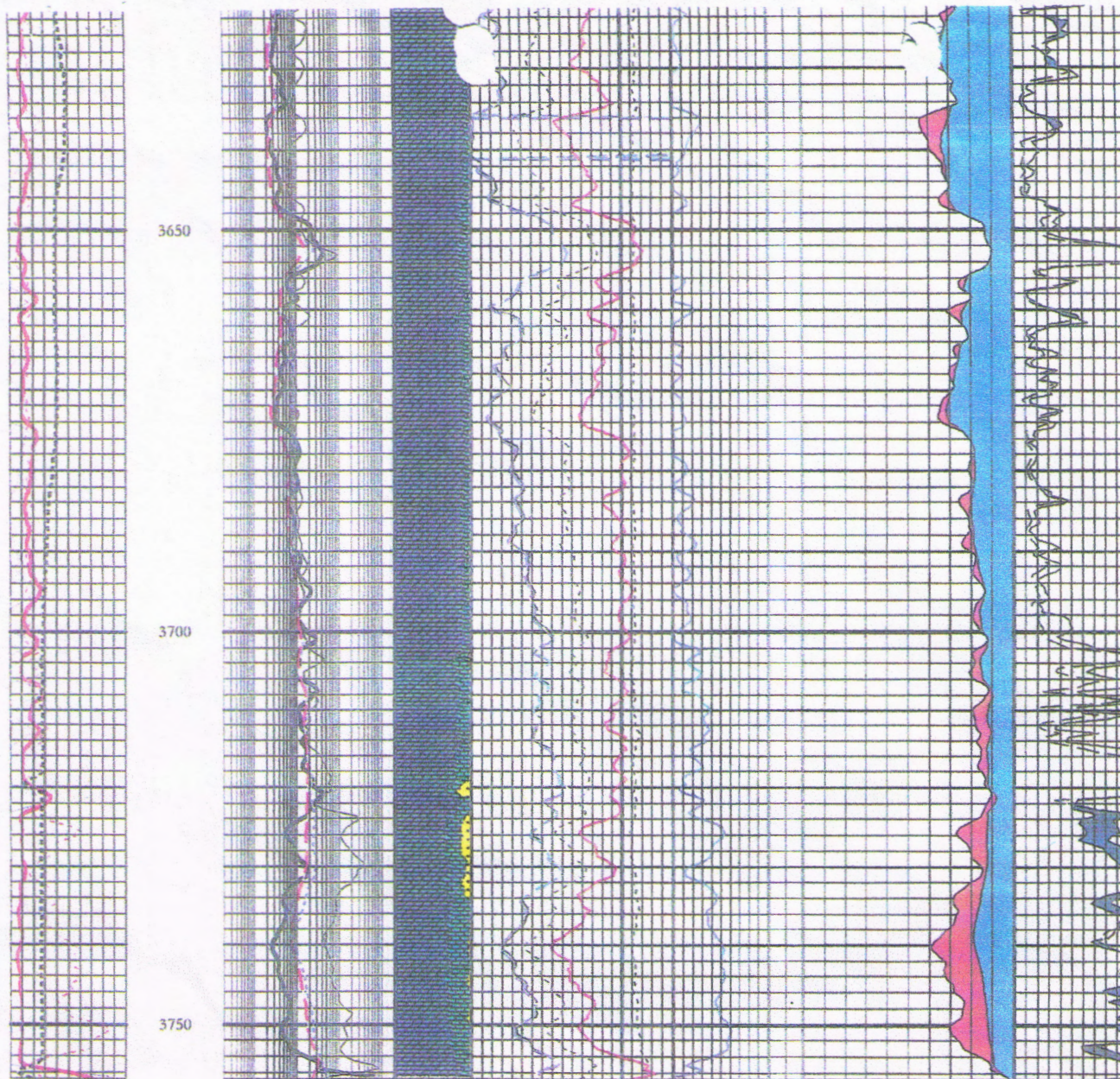
The Arizona State Land Department makes no warranties, expressed or implied, with respect to the information shown on this map.
Map produced by the Arizona State Land Department - May 27, 2010

O:\dixon\OilandGas_Base\OilandGas_Base.mxd
Joe Dixon

CORR		
CALI		
4.0 (in)	14.0	
DGA		
.5 (gm/cc)	3.0	
GR		
0.0 (API)	150.0	
SWB		
0.0 (V/V)	1.0	
RFA		
0.0 (Ohmm)	0.5	

RES	LITH	POROSITY	Sw	F	VOL	ML
ILD	Sandstone	PHIA	SWE	Yellow	BV	MNOR
0.2 (Ohmm) 2000.0		(V/V) -0.1	1.0 (V/V) 0.5		(V/V)	0.0 (OHMM) 50.0
SGRDA	Dolo(1)	PHID	PAY		PHIE	MINV
0.2 (OHMM) 2000.0		(V/V) -0.1			(V/V)	0.0 (OHMM) 50.0
ILM	Limestone	PHIN			HC	Blue
0.2 (Ohmm) 2000.0		(V/V) -0.1				
RO		XOVER			Free Water	
0.2 (Equation) 2000.0						
		DRHO				
		-0.75 (gm/cc) 0.25				
		PEF				
		0.0 (barns/elec) 10.0				
		NPHI				
		0.3 (V/V) -0.1				





USER DEFINED CURVE EQUATIONS:

```

RT :          ILD[]
PORDens :     PHID[]
PORNeut :     NPHI[]
PHID :        (RHOM - RHOB[]) / (RHOM - RHOF)
PHIA :        (PORDens[] + PORNeut[]) / 2
VSHL :        MIN(1,MAX(0,(GR[] - GRcln)/(GRshl - GRcln)))
PHIE :        PHIA[] * (1 - VSHL[])
RO :          a * RW / (PHIE[])^m
SW :          (RO[] / RT[])^0.5
RWA :         RT[] * PHIA[] ^ m
TOTPAY :      PHIE[] >= .08 & BVWE[] <= .03

```

USER DEFINED CONSTANTS:

```

a :           1
GRcln :       20
GRshl :       100
m :           2

```


Meteor Crater Prospect

Prospect Location:	Coconino County, Arizona Townships 19 North, Range 13 East
Geologic Province:	Holbrook Basin
Prospective Acreage:	3,200 acres
Type of Trap:	Combination of structural and stratigraphic
Primary Objective:	Permian
Secondary Objectives:	Devonian
Estimated Reserves: <i>Per Well Basis</i>	Permian: 171,000-457,000 BO Devonian: 295,000 BO
Net Revenue Interest	87.5%
Total Depth:	Permian: 1,850 feet Devonian: 3,850 feet
Comments:	<p>The Holbrook Energy 26-1 tested oil and condensate from the Devonian (lower) 3,724 to 3,728 feet. The Devonian (upper) from 3,613 to 3,618 feet calculated oil on water with 14% porosity. The Permian Amos Wash (1,752-1,757') log analysis indicated oil with low porosity. During testing operations 25.1 gravity oil was displaced to the pits from the Permian Fort Apache (1,635 to 1,645 feet).</p> <p>The primary objective is to drill a Permian Fort Apache (1,725 feet TD) to attempt a commercial crude oil completion.</p>

STIVERS CONSULTING inc.

GEOLOGICAL
CONSULTING

HYDROCARBON
MUD-LOGGING

P.O. DRAWER 1387
GRAHAM, TEXAS 76450
817/549-6275 549-8202 FAX

**GUS BERRY
26-1 STATE 13-104416
COCONINO COUNTY, ARIZONA
GEOLOGIC, DRILLING AND
ENGINEERING REPORT
OCTOBER 1999**



WELL SUMMARY

OPERATOR:

Gus Berry
P.O. Box 730
Okmulgee, OK 74447
918.756.4416 office

Company Representative: Earl Berry
918.629.3523 mobil

LEASE & WELL NO.:

26-1 State 13-104416

LOCATION:

3500' FWL, 467' FNL of Section 26, Township 19-N, Range 13-E, N/1/2 of NE/1/4, 18 miles west of Winslow, Coconino County, Arizona.

DIRECTIONS TO LOCATION:

West of Winslow, Arizona on I-40, 20 miles to exit 233 (Meter Crater Road). Turn left, go south 4 miles to (-T-) Ranch sign. Turn left and go east 3 miles to cattle guard at Ranch House. Cross cattle guard and take the left "Y", continue east 4 miles to Key Energy Rig # 26. **3.5**

API NO:

02-005-20033

DRILLING PERMIT NO.:

886

ELEVATIONS:

Ground level: 5250'
Derrick floor: 5257'
Kelley bushing: 5258'

RE-ENTRY DATE:

September 30, 1999

TOTAL DEPTH DATE:

October 17, 1999 at 10:00 AM

TOTAL DEPTH DRILLER:

3844'

TOTAL DEPTH LOGGER:

3842'

DRILL STEM TESTS:

NONE

CORES:

NONE

STIVERS CONSULTING inc.