

Covey

The Well Watchers

Scale 1:240 (5"=100') Imperial

Well Name: **ROCKING CHAIR RANCH #2**
Location: **Section 13 - Township 14 North - Range 19 East**
Licence Number: **API 02 - 017 - 20,110** Region: **Navajo County, AZ.**
Spud Date: **11 November 2015** Drilling Completed: **NA**
Surface Coordinates: **1,980' FNL & 1,980' FEL, NE/4**
(Approximately C SW NE)
Bottom Hole Coordinates: **NA**
Ground Elevation (ft): **5,845'** K.B. Elevation (ft): **5,854'**
Logged Interval (ft): **650'** To: **1,374'** Total Depth (ft): **NA**
Formation: **Supai Formation**
Type of Drilling Fluid: **Chemical; Low Solids (non-dispersed)**

Printed by MUD.LOG from WellSight Systems 1-800-447-1534 www.WellSight.com

OPERATOR

Company: **BLACKSTONE EXPLORATION COMPANY, LLC.**
Address: **P. O. BOX 940** POC:
Holbrook, Arizona **Carmon Decker Bonanno**
(928) 524-7786 Chief Geologist: **Roger Martin**

GEOLOGIST

Name: **Curtis Covey**
Company: **COVEY - The Well Watchers**
Address: **6548 Bedford Circle**
Derby, Kansas 67037
Office: **(316) 776 - 0367** Cell: **(316) 217-4679**

KB: 5,854'

FORMATION TOPS

GL: 5,845'

Formation	Rotary Sample Depth (Datum)	E-log Depth (Datum)
Coconino SS	Surface Casing	Surface Casing
Supai Fm	Surface Casing	Surface Casing
Ft. Apache	NA	NA
B / Ft. Apache	NA	NA

RTD: ?

LTD: ?

ATD: ?

E-log is ? to rotary measured depth (B/Surface' - RTD).
? feet total 'float' in hole.

E - Loggers: ?

**22" Hole (Conductor)
Drilled by Willis Brothers**

11 Nov --- Spud @ ? am. Drill to 42'.
Set 16" (53#) conductor casing @ 42'.
Cement with ?sx Class A (4% Gel) followed by 80 sx Class A (4% Gel).
[Willis Brothers]
WOC.

**12-1/4" Hole (Surface Casing)
Drilled by Willis Brothers**

18 --- Finish setting casing @ 637'.
Cemented w/ 130 sx of A-Con (12ppg - 2%CC & Polyflake) + 150 sx Class C (14.8pp - 2%CC & Polyflake).
Cement circulated (45 Bbls).
Plug down @ 9:30am.
[Basic Services - Liberal, KS.]

**7-7/8" Hole (Main Hole -- Tri-Cone Bit)
Drilled by Company Tools**

21 Dec --- Unstuck.
7am @ 907'. T/O. Work on Pump.
22 --- Resumed Drilling @ 12:03am.
PO Blew/ Plugged Bit @ 020'.
Drill to 939'.
7am @ 939'. Drilled to 1,219'.
clabbered Mud. Jet. Mixed Mud.
23 --- Resumed Drilling.
7am @ 1,374'.
Suspended Drilling for Holidays.

Operator released DQ (Mass Spec) and Gas Detector Trailer / Wellsite Geologist @ 1,374'.

**12-1/4" Hole (Surface Casing)
Drilled by Willis Brothers**

12 Nov --- WOC. 8am @ 42'.
Under conductor casing @ ? with air drilling.
13 --- 8am @ ?. Lost Circ @ 483'.
14 --- 8am @ ?.
Water/LCM drilling.
15 --- No Work.
16 --- Weather.
17 --- 8am @ 585'.
Resumed Drilling @ am.
Drilled to 640'. Prep Hole.
Run 8-5/8" casing (23#)
Start and

**7-7/8" Hole (Main Hole -- Tri-Cone Bit)
Drilled by Company Tools**

19 Dec --- Work on Pump/Rig.
7am @ 626'.
Drill cement & plug.
Under Surface Casing @ 11:15am.
Intermittent Work on Rig.
20 --- Stuck @ 907'.
7am @ 907'. Spotted total 3,000 gal #2 Diesel. About 1,000 gal leaked-off into Formation.
Wait.

Selected HOLE DEVIATION (NA' - NA')

DEPTH / INCLINATION

?' / ? .00 --- NA (Surface)
?' / ? .00 --- NA (RTD)

STRAP @ NA

Board: NA
Strap: NA
Diff: NA

CONTRACTOR

Blackstone Exploration Company Tools

P. O. Box 940
Holbrook, Arizona 86025
Office: (928) 524-7786

Pump: EMSCO D-300
6" x 14" @ 60 SPM.
--> 907': 125 # @ standpipe (under S/C).
907' --> ? : 325 # @ standpipe

After Mudup / Main Hole:
WOB 10M @ 45/60 RPM.

Drill Collars: 6" x 2.6" --- 268'. (73.25#/ft)
Collar Weight in Air: 19,631#
Collar Weight in MUD: 17,059#
(@ 8.6 ppg / Buoyancy Factor 0.869)
Design Factor: 15%, therefore:
available WOB is 14,500#
Drill Pipe: 4-1/2"XH. (16#/ft - used)

BIT RECORD

DATE	SIZE	TYPE	(IADC)	JET SIZE	DEPTH IN / OUT	CUM. FT.	HOURS	Ft/Hr ROP
Conductor:								
11 Nov 2015	22"	?		24 - 24 - 24	0 / 42'	42'	?	?
Surface:								
12 Nov 2015	12-1/4"	?		18 - 18 - 18	42' / 640'	596'	?	?
Main Hole:								
19 Dec 2015	7-7/8"	GT Tool GT19XG	(517)	20 - 20 - 20	640' / ?	?	?	?

ACCESSORIES

FOSSIL

Algae
Amph
Belm
Bioclst
Brach
Bryozoa
Cephal
Coral
Spore
Crin
Echin
Fish
Foram
Fossil
Gastro



Oolite
Ostra
Pelec
Pellet
Pisolite
Plant
Strom

MINERAL

Mica
Anhy
Arggrn
Arg
Bent
Bit
Brecfrag



Calc
Carb
Chtdk
Chtlt
Dol
Feldspar
Ferrpel
Ferr
Glau
Gyp
Hvymin
Kaol
Marl
Minxl
Nodule
Phos



Pyr
Salt
Sandy
Silt
Sil
Sulphur
Tuff
Copper
Ooliticastic
Ooloid
Oolite
Sucrosic
Dark specks

STRINGER

Calc dol



Silty dol
Anhy
Arg
Bent
Coal
Dol
Gyp
Dol ls
Ls
Mrst
Calc dol
Sltstrg
Ssstrg
Chalk
New symbol

OTHER SYMBOLS

ACTIVITY

Lost circluation
Circulate for sam



Circulate for sam
EVENT
Rtd
Trip



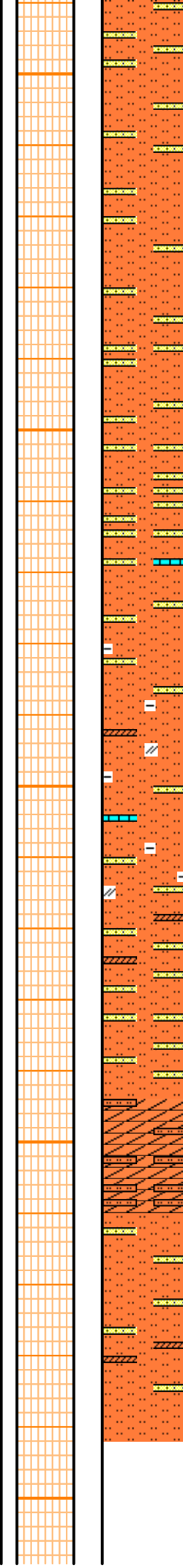
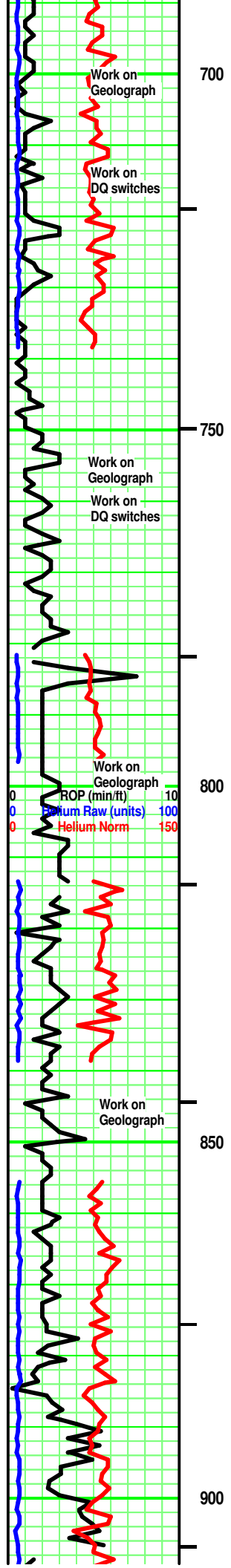
Sidewall



Connection
Rft

SN - Dark Drusy Gray. Sing. massive. tr calc. Massive. Firm.

available WOB is 14,500#. Drill Pipe: 4-1/2"XH. (16#/ft - used)



Mixture of: Silty SS - Orangish Red/ Reddish Orange/ Clear/ tr Lt Off White Orange/ no to tr Off White. Mot. Silt/ VF, SR qtz grains. Mod sphericity. Vitreous/ tr frosted luster. Point / 'floating' grain contact. Silty. No/ tr calc infill/frags. mostly No/ some minute black specks/frags (carb flecks?). partly Friable. tr/ some Fair vis por.

Sandy Siltstone - Orangish Red/ Reddish Orange. Sandy (Silt/VF, SR, qtz grains. Vitreous / tr frosted luster).

Add rare to few pcs increasing with depth: LS (Dolomitic) - Drusy Gray. Sing. Crypto-xln. xln por. No vis por.

Add few pcs: AnH - Clear to semi-opaque. Sing.

Add rare to few pcs with depth: Clay - White. Sing. Hi Friable.

Mixture of: Silty SS - Orangish Red/ Reddish Orange/ Clear/ tr Pinkish Orange/ tr Lt Off White Orange/ no to tr Off White. Mot. Silt/ VF, SR qtz grains. Mod sphericity. Vitreous/ tr frosted luster. Point / 'floating' grain contact. Silty. No/ tr calc infill/frags. mostly No/ some minute black specks/frags (carb flecks?). partly Friable. tr/ some Fair vis por.

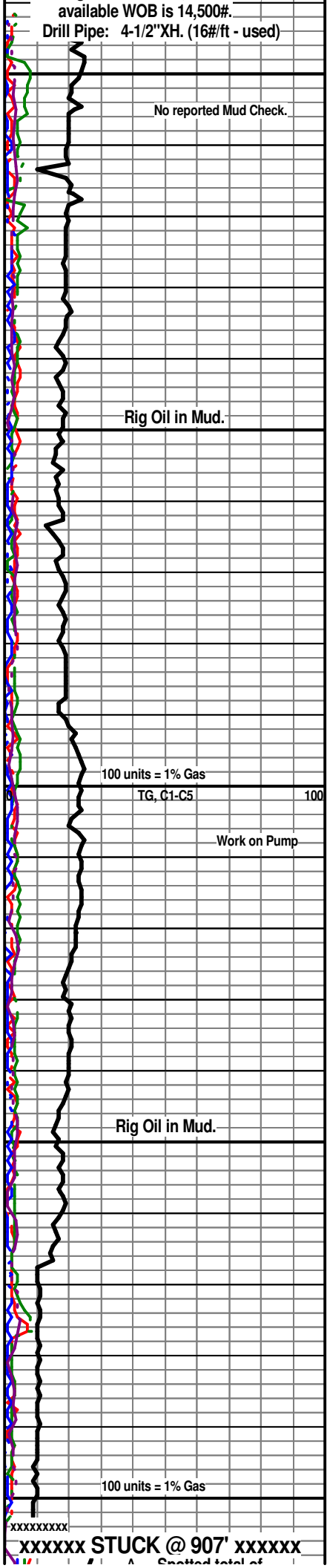
Sandy Siltstone - Orangish Red/ Reddish Orange. Sandy (Silt/VF, SR, qtz grains. Vitreous / tr frosted luster).

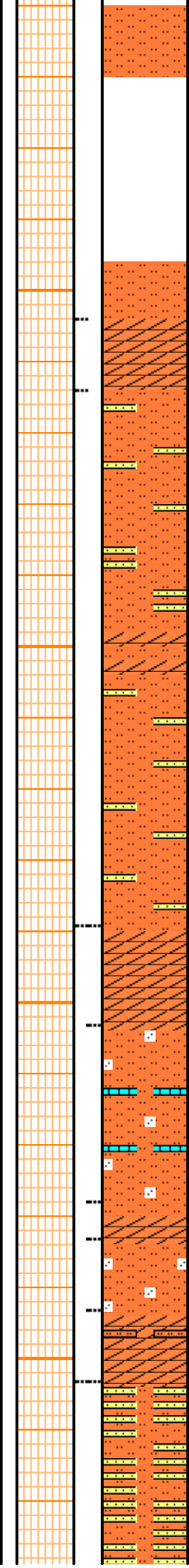
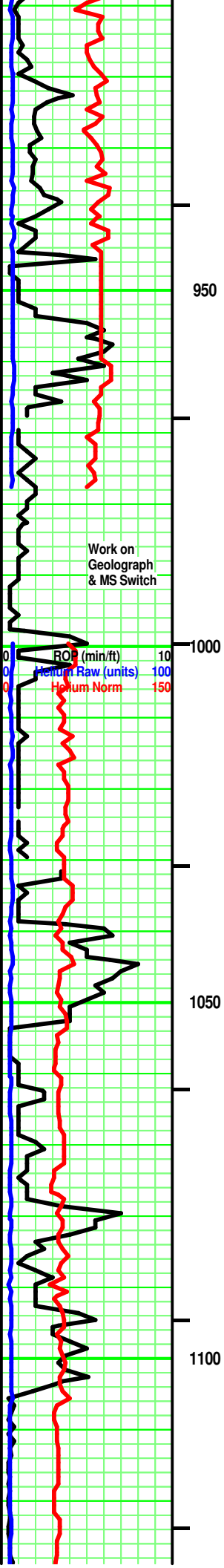
AnH / Gypsum - White. Sing. Hi Friable. Clear/ Off Tannish Gray. Mot/ Mixed. Massive. -mixed with-Claystone.

Mixture of: Sandy Siltstone - Orangish Red/ Reddish Orange. Sandy (Silt/VF, SR, qtz grains. Vitreous / tr frosted luster).

Silty SS - Orangish Red/ Reddish Orange/ Clear/ tr Pinkish Orange/ tr Lt Off White Orange/ no to tr Off White. Mot. Silt/ VF, SR qtz grains. Mod sphericity. Vitreous/ tr frosted luster. Point / 'floating' grain contact. Silty. No/ tr calc infill/frags. mostly No/ some minute black specks/frags (carb flecks?). partly Friable. tr/ some Fair vis por.

few samples - Mush:





Similar to immediately above.

Sandy Siltstone - Orangish Red/ Reddish Orange. Sandy (Silt/VF, SR, qtz grains. Vitreous / tr frosted luster). mostly Friable.

Anh/Gyp - Off White/ Off Tan/ Lt Grayish Tan. some Sing/ some Mot/ some Mixed. Crypto-xln. xln por. Brittle. No/ tr vis por.

Sandy Siltstone - Orangish Red/ Reddish Orange. 10% - 40% Sandy (Silt/VF, SR, qtz grains. Vitreous / tr frosted luster). mostly Friable.

few pcs: Anh/Gyp - Off White/ Off Tan/ Lt Grayish Tan. some Sing/ some Mot/ some Mixed. Crypto-xln. xln por. Brittle. No/ tr vis por.

Sandy Siltstone - Orangish Red/ Reddish Orange. 10% - 40% Sandy (Silt/VF, SR, qtz grains. Vitreous / tr frosted luster). mostly Friable.

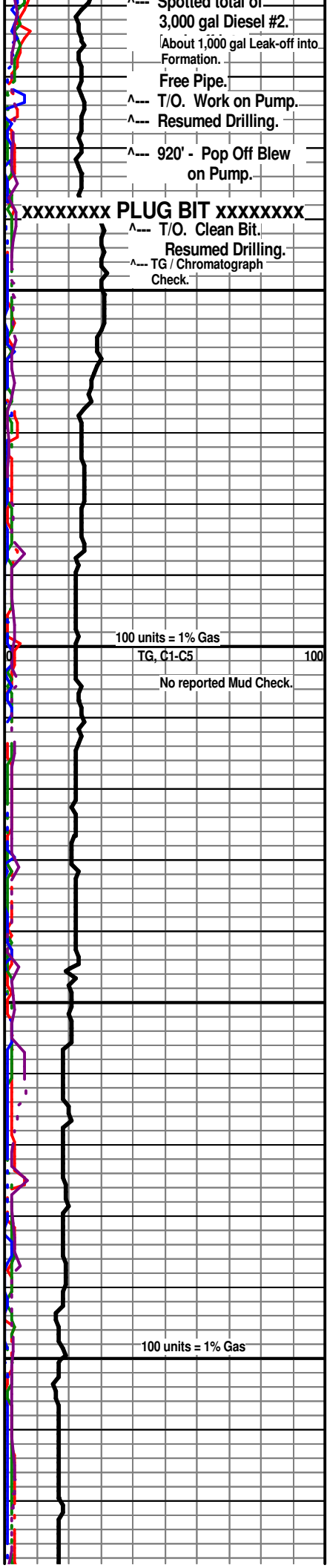
Interbedded Anh / Gypsum, Siltstone
Anh/ Gyp - Off White/ Lt Grayish White/ Off Whitish Tan. tr/some Sing/ some Mot/ tr Mixed. Rare Clear. Massive. some Bryc texture. No/ som misc minute inclusions. Brittle in part. Massive.

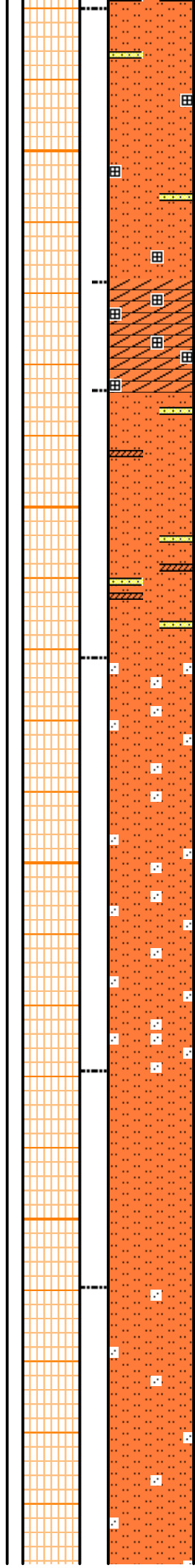
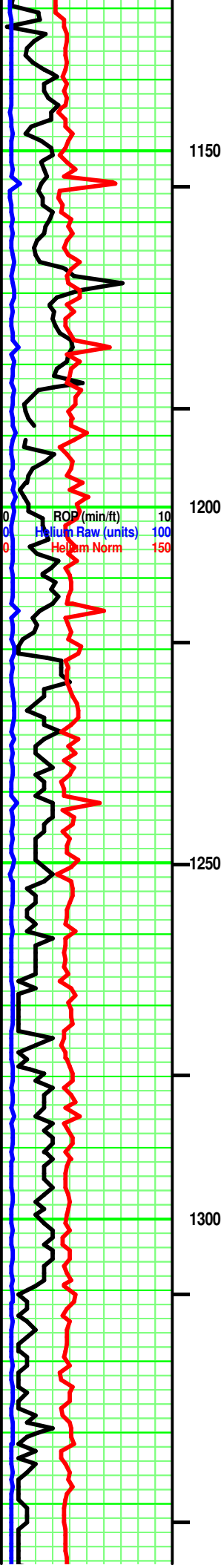
Sandy Siltstone - Orangish Red/ Reddish Orange. 10% - 40% Sandy (Silt/VF, SR, qtz grains. Vitreous / tr frosted luster). mostly Friable.

few pcs: LS (tr Dol) - Tan/ Tannish Gray/ tr Off Whitish Tan. XF/Crypto-xln. xln por. mostly No/ rare Clear, infill Re-xln. No/ some Silt sized, SR qtz grains. No/ tr vis por.

Siltstone - Orangish Red/ Reddish Orange. <10% Sandy (Silt/VF, SR, qtz grains. Vitreous / tr frosted luster). mostly Friable.

Silty SS - Orangish Red/ Reddish Orange/ Clear/ tr Lt Off White Orange/ no to tr Off White. Mot/ Mixed. Silt/ VF, SR qtz grains. Mod sphericity. Vitreous/ tr frosted luster. Point / 'floating' grain contact. Silty. No/ tr calc infill/frags. mostly No/ some minute black specks/frags (carb flecks?). partly Friable. tr/ some Fair vis por.





Mixture of:
 Sandy Siltstone - Orangish Red/ Reddish Orange.
 10% - 40% Sandy (Silt/VF, SR, qtz grains. Vitreous /
 tr frosted luster). mostly Friable.

few / some pcs: Salt - Clear. Sing. Transparent.
 Blocky.

Anh/ Gyp - Off White/ Lt Grayish White/ Off
 Whitish Tan. tr/some Sing/ some Mot/ tr Mixed.
 Rare Clear. Massive. some Bryc texture. No/ som
 misc minute inclusions. Brittle in part. Massive.

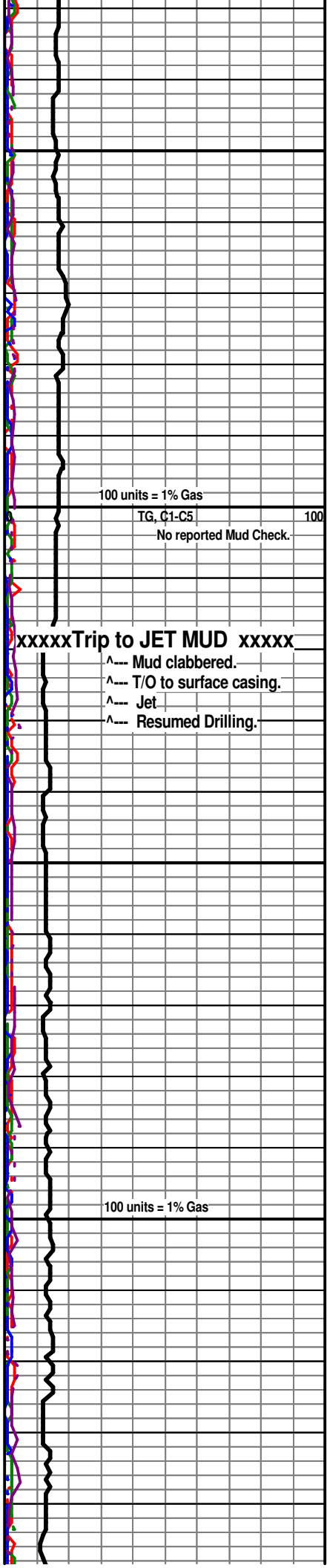
Sandy Siltstone - Orangish Red/ Reddish Orange.
 10% - 40% Sandy (Silt/VF, SR, qtz grains. Vitreous /
 tr frosted luster). mostly Friable.

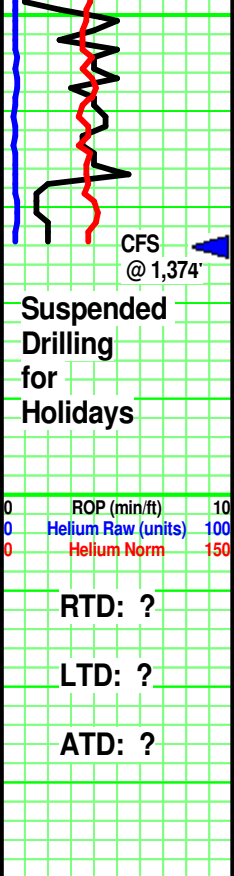
few / some pcs:
 Anh/ Gyp - Off White/ Lt Grayish White/ Off Whitish Tan.
 tr/some Sing/ some Mot/ tr Mixed. Rare Clear. Massive. some
 Bryc texture. No/ som misc minute inclusions. Brittle in part.
 Massive.

Sandy Siltstone - Dark Brownish Red ('brick red')/
 tr to some Orangish Red/ / tr Lt Off White Orange.
 Mot/ Mixed. Silt/ VF, SR qtz grains. Mod
 sphericity. Vitreous/ tr frosted luster. 'floating'
 grain contact. mostly No/ some minute black
 specks/frags (carb flecks?). partly Friable. tr vis
 por.

Siltstone - Orangish Red/ some Dark Reddish
 Brown. Sing. Firm. Massive.

Sandy Siltstone - Dark Brownish Red ('brick red')/
 tr to some Orangish Red/ / tr Lt Off White Orange.
 Mot/ Mixed. Silt/ VF, SR qtz grains. Mod
 sphericity. Vitreous/ tr frosted luster. 'floating'
 grain contact. mostly No/ some minute black
 specks/frags (carb flecks?). partly Friable. tr vis
 por.





AnH/Gyp - Off White/ Lt Grayish White/ Off Whitish Tan. tr/some Sing/ some Mot/ tr Mixed. No/ som misc minute inclusions. Brittle in part. Massive.

Sandy Siltstone - Dark Brownish Red ('brick red')/ tr to some Orangish Red/ / tr Lt Off White Orange. Mot/ Mixed. Silt/ VF, SR qtz grains. Mod sphericity. Vitreous/ tr frosted luster. 'floating' grain contact. mostly No/ some minute black specks/frags (carb flecks?). partly Friable. tr vis por.

ROCKING CHAIR RANCH #2
 1,980' FNL & 1,980' FEL 13 - T14N - R19E
 Navajo County, Arizona

BLACKSTONE EXPLORATON CO., LLC.
 Holbrook, Arizona

