



### Mass Spec Chemical Profile



Scale 1:480 (2.5"=100') Imperial  
Measured Depth Log

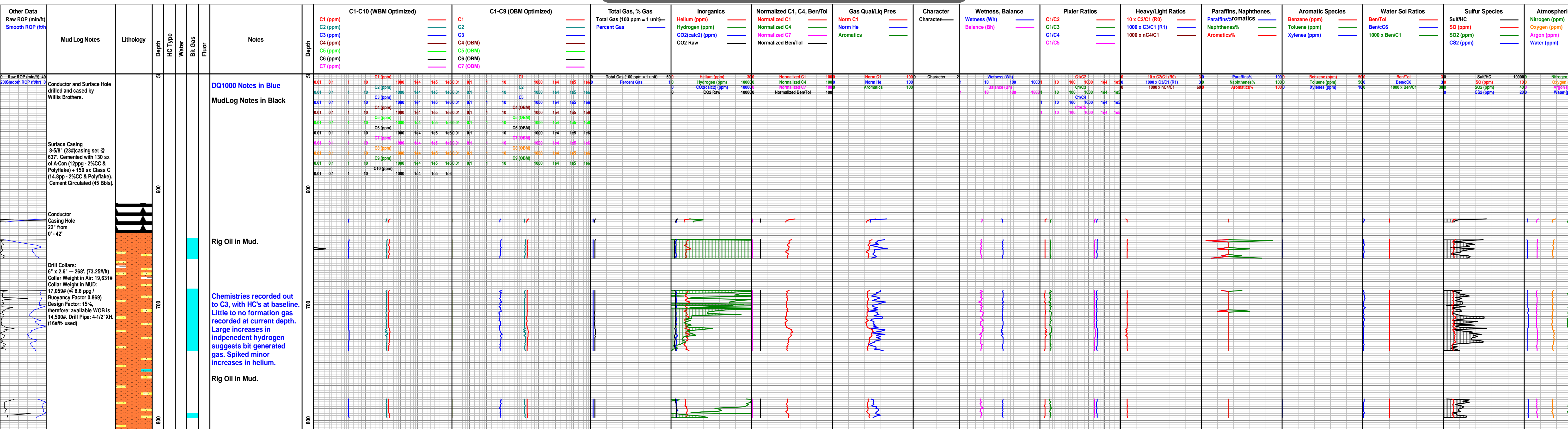
Well Name: Blackstone "Rocking Chair Ranch #2" The Well Watchers  
 API: 02 - 017 - 20,110  
 Location: Section 13 - Township 14 North - Range 19 East  
 License Number: 02 - 017 - 20,110 Region: Navajo County, AZ.  
 Spud Date: Drilling Completed:  
 Surface Coordinates: 1,980' FNL & 1,980' FEL, NE/4 (Approximately C SW NE)  
 Bottom Hole Coordinates:  
 Ground Elevation (ft): K.B. Elevation (ft):  
 Logged Interval (ft): 626' To: 1374' Total Depth (ft): 748'  
 Formation: Supai Formation  
 Type of Drilling Fluid: Chemical; Low Solids (non-dispersed)  
 Printed by MUD.LOG from WellSight Systems 1-800-447-1534 www.WellSight.com

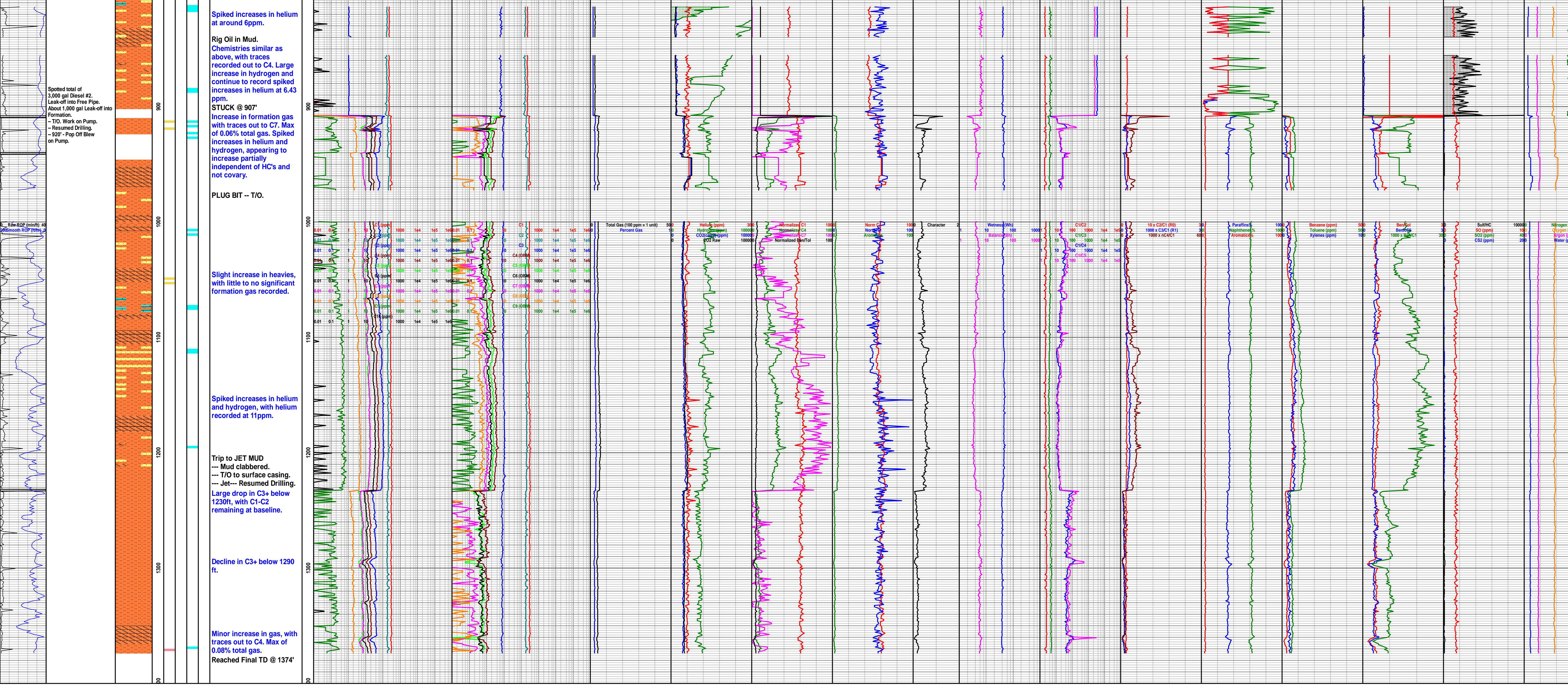
#### FLUID INCLUSION TECHNOLOGIES, INC. and Affiliates DISCLAIMER

LEGAL NOTICE: This report was prepared by Fluid Inclusion Technologies, Inc. and/or its Affiliates as an account of work performed for the client and is intended for informational purposes only for the client. Neither Fluid Inclusion Technologies, Inc. and its Affiliates, nor any person or entity acting on their behalf, makes any warranty or representation, express or implied, with respect to the completeness, accuracy, usefulness or applicability for any purpose of the information contained in this report. Any use of this information in connection with a specific application must be based on independent examination by qualified professional personnel to verify its accuracy and its applicability to the intended application. Fluid Inclusion Technologies, Inc. and its Affiliates hereby disclaim any and all liability arising in connection with the use of any information, data, apparatus, method or process described or disclosed in this report. Any use of information contained in this report in connection with a specific application shall constitute a waiver of any and all claims against Fluid Inclusion Technologies, Inc. and its Affiliates, and any person or entity acting on their behalf or representing them, arising from such use.

|                |              |                |              |
|----------------|--------------|----------------|--------------|
| <b>HCTYPE</b>  | <b>WATER</b> | <b>BIT GAS</b> | <b>FLUOR</b> |
| Weak Dry Gas   | Strong Water | Strong Bit Gas | Weak Fluor   |
| Strong Dry Gas | Weak Water   | Weak Bit Gas   | Mod Fluor    |
| Weak WG-GC     |              |                | Strong Fluor |
| Strong WG-GC   |              |                |              |
| Weak GC-Oil    |              |                |              |
| Strong GC-Oil  |              |                |              |

|                                                                                                                                                                                                                                                                                                                                                                                                                                                                                                                  |       |              |            |        |       |       |         |            |      |       |              |        |       |      |         |      |     |       |         |        |      |    |          |       |       |      |       |  |
|------------------------------------------------------------------------------------------------------------------------------------------------------------------------------------------------------------------------------------------------------------------------------------------------------------------------------------------------------------------------------------------------------------------------------------------------------------------------------------------------------------------|-------|--------------|------------|--------|-------|-------|---------|------------|------|-------|--------------|--------|-------|------|---------|------|-----|-------|---------|--------|------|----|----------|-------|-------|------|-------|--|
| <b>ROCK TYPES</b>                                                                                                                                                                                                                                                                                                                                                                                                                                                                                                |       |              |            |        |       |       |         |            |      |       |              |        |       |      |         |      |     |       |         |        |      |    |          |       |       |      |       |  |
| <table border="0"> <tr><td>Cht</td><td>Salt</td><td>Carbsh</td><td>Siltst</td></tr> <tr><td>Clyst</td><td>Shale</td><td>Qtzwash</td><td>Shale, sdy</td></tr> <tr><td>Coal</td><td>Shcol</td><td>Granite wash</td><td>nosmpl</td></tr> <tr><td>Congl</td><td>Shgw</td><td>Limeygw</td><td>Dolo</td></tr> <tr><td>Gyp</td><td>Silst</td><td>Sandygw</td><td>Shlygw</td></tr> <tr><td>Lmst</td><td>Ss</td><td>Lsdetrst</td><td>Csgpt</td></tr> <tr><td>Mrlst</td><td>Till</td><td>Lsnew</td><td></td></tr> </table> | Cht   | Salt         | Carbsh     | Siltst | Clyst | Shale | Qtzwash | Shale, sdy | Coal | Shcol | Granite wash | nosmpl | Congl | Shgw | Limeygw | Dolo | Gyp | Silst | Sandygw | Shlygw | Lmst | Ss | Lsdetrst | Csgpt | Mrlst | Till | Lsnew |  |
| Cht                                                                                                                                                                                                                                                                                                                                                                                                                                                                                                              | Salt  | Carbsh       | Siltst     |        |       |       |         |            |      |       |              |        |       |      |         |      |     |       |         |        |      |    |          |       |       |      |       |  |
| Clyst                                                                                                                                                                                                                                                                                                                                                                                                                                                                                                            | Shale | Qtzwash      | Shale, sdy |        |       |       |         |            |      |       |              |        |       |      |         |      |     |       |         |        |      |    |          |       |       |      |       |  |
| Coal                                                                                                                                                                                                                                                                                                                                                                                                                                                                                                             | Shcol | Granite wash | nosmpl     |        |       |       |         |            |      |       |              |        |       |      |         |      |     |       |         |        |      |    |          |       |       |      |       |  |
| Congl                                                                                                                                                                                                                                                                                                                                                                                                                                                                                                            | Shgw  | Limeygw      | Dolo       |        |       |       |         |            |      |       |              |        |       |      |         |      |     |       |         |        |      |    |          |       |       |      |       |  |
| Gyp                                                                                                                                                                                                                                                                                                                                                                                                                                                                                                              | Silst | Sandygw      | Shlygw     |        |       |       |         |            |      |       |              |        |       |      |         |      |     |       |         |        |      |    |          |       |       |      |       |  |
| Lmst                                                                                                                                                                                                                                                                                                                                                                                                                                                                                                             | Ss    | Lsdetrst     | Csgpt      |        |       |       |         |            |      |       |              |        |       |      |         |      |     |       |         |        |      |    |          |       |       |      |       |  |
| Mrlst                                                                                                                                                                                                                                                                                                                                                                                                                                                                                                            | Till  | Lsnew        |            |        |       |       |         |            |      |       |              |        |       |      |         |      |     |       |         |        |      |    |          |       |       |      |       |  |





Spotted total of 3,000 gal Diesel #2. Leak-off into Free Pipe. About 1,000 gal Leak-off into Formation.  
 - T/O. Work on Pump.  
 - Resumed Drilling.  
 - 920' Pop Off Blow on Pump.

**Spiked increases in helium at around 6ppm.**  
**Rig Oil in Mud.** Chemistries similar as above, with traces recorded out to C4. Large increase in hydrogen and continue to record spiked increases in helium at 6.43 ppm.  
**STUCK @ 907'**  
 Increase in formation gas with traces out to C7. Max of 0.06% total gas. Spiked increases in helium and hydrogen, appearing to increase partially independent of HC's and not covary.

**PLUG BIT -- T/O.**

Slight increase in heavies, with little to no significant formation gas recorded.

Spiked increases in helium and hydrogen, with helium recorded at 11ppm.

Trip to JET MUD  
 --- Mud clabbered.  
 --- T/O to surface casing.  
 --- Jet-- Resumed Drilling.  
 Large drop in C3+ below 1230ft, with C1-C2 remaining at baseline.

Decline in C3+ below 1290 ft.

Minor increase in gas, with traces out to C4. Max of 0.08% total gas.  
 Reached Final TD @ 1374'

